

Exclusive apartment with terrace for rent in an emblematic area of ??Barcelona's Eixample, right next to La Pedrera

Ref: CM1521

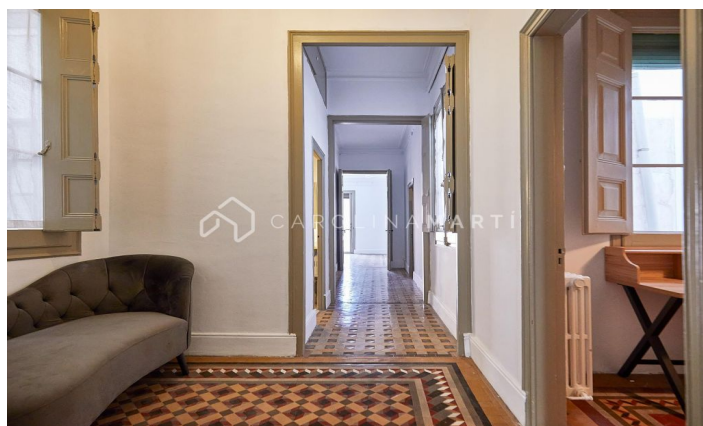
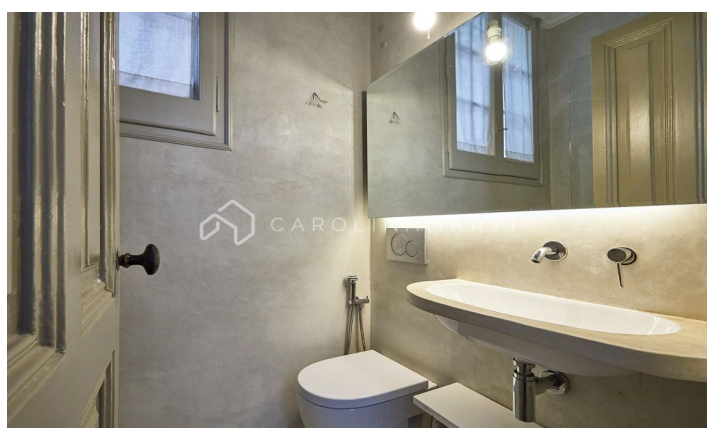


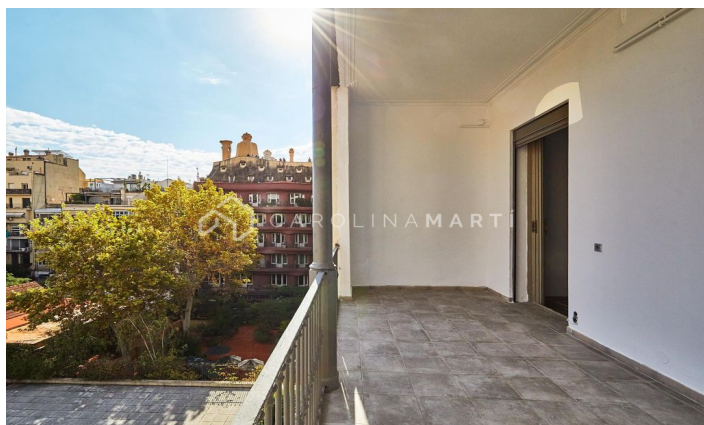
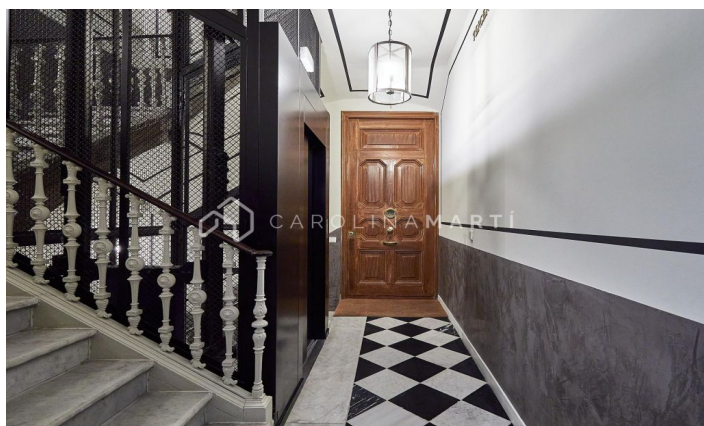
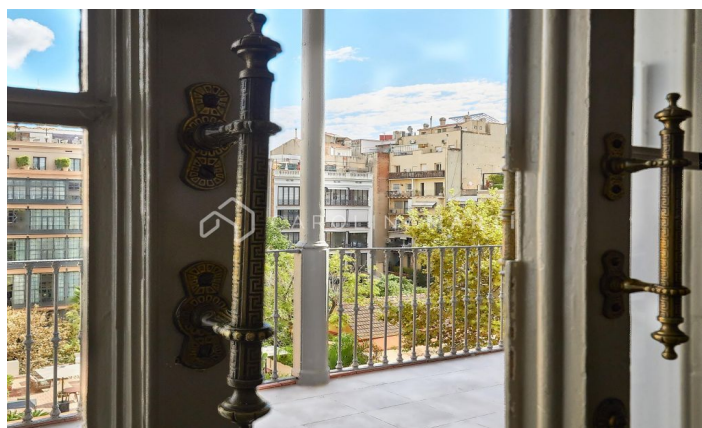
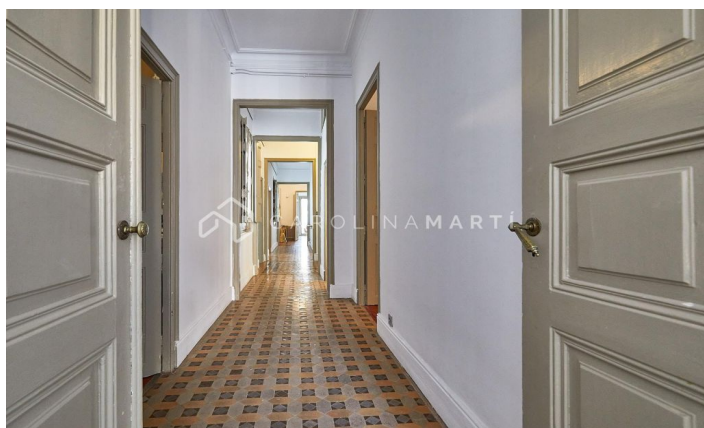
Eixample Dret / Barcelona

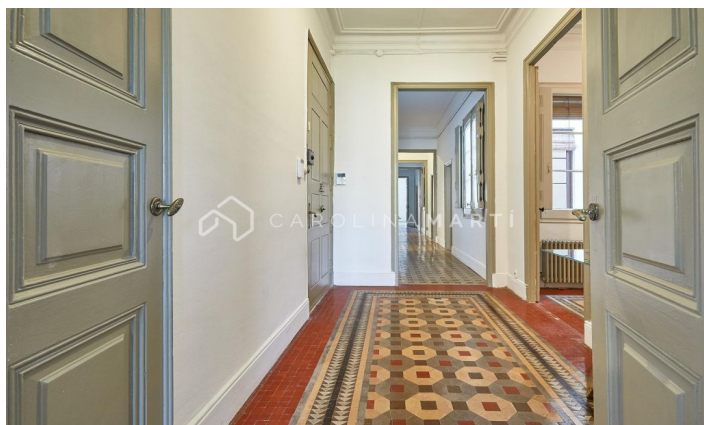
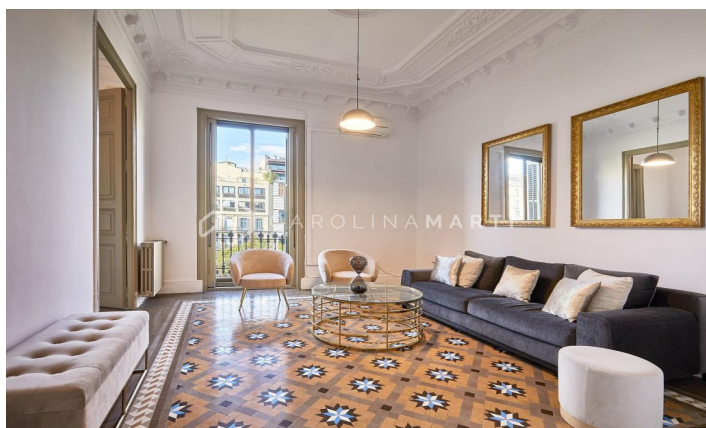
SEASONAL RENTAL APARTMENT. Exclusive 240 m² Modernist apartment with terrace and views of La Pedrera. In the most emblematic area of ??Barcelona's Eixample district, right next to La Pedrera - Casa Milà, is this extraordinary residence located on the entire fourth floor of a listed Modernist building. The property, with approximately 240 m² of built area and a 24 m² east-facing terrace, is a unique piece in terms of its surface area, location, and preservation. Five bedrooms, two bathrooms, two living rooms with fireplaces, four balconies overlooking Passeig de Gràcia, and exceptional natural light in every room. The high coffered ceilings, the original hydraulic tile floors, and the meticulous renovation of the building (with a doorman, elevator, and elegant marble staircase) give character to a home that is both functional and representative. The layout is completely square, rational, and comfortable, with spacious and well-connected spaces. The views of one of Europe's most iconic avenues are unbeatable. Live in the heart of Barcelona, ??surrounded by architecture, luxury, and culture.

€6,500

240 m²
 5 Bedrooms
 2 Bathrooms
 A/C
 Heating
 Views
 Storage
 Lift
 Furnished
 Parking
 Terrace
 Concierge
 Balcony
 Built-in closets
 Outside







Contact us for more information or to arrange a viewing

Tel: +34 93 241 10 95

info@carolinamarti.com

www.carolinamarti.es