

Exquisite Apartment Overlooking La Pedrera

Ref: CM1598

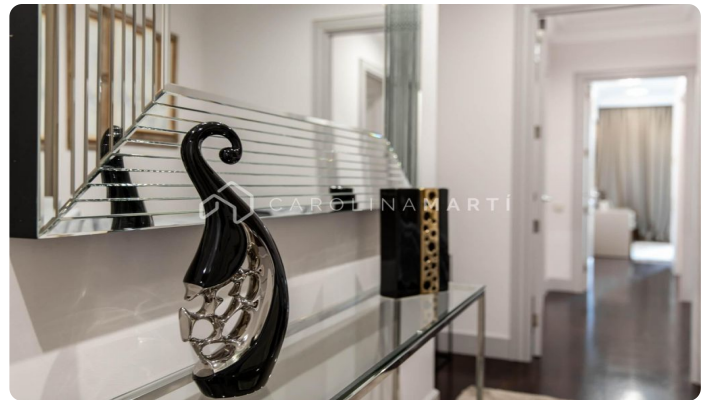
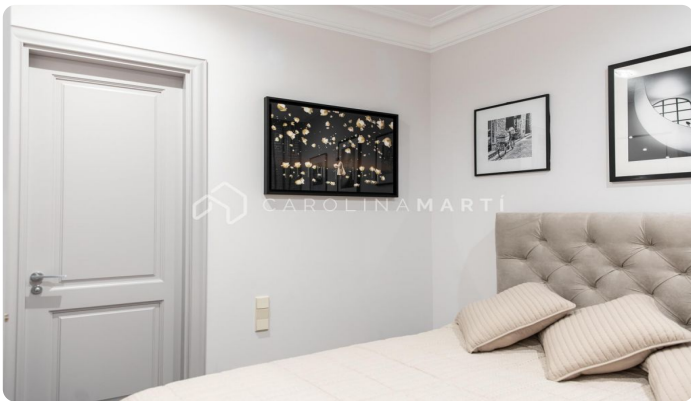


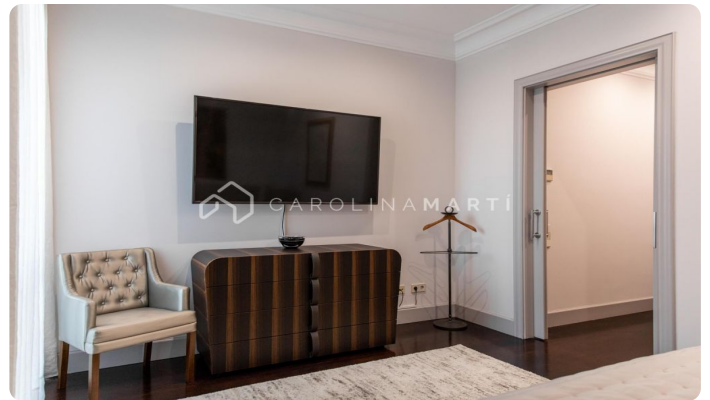
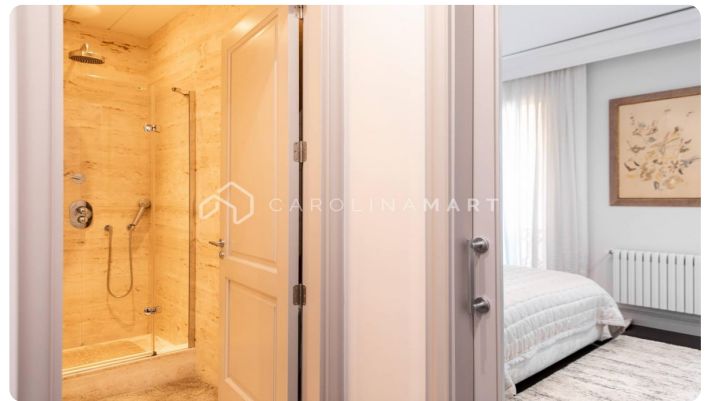
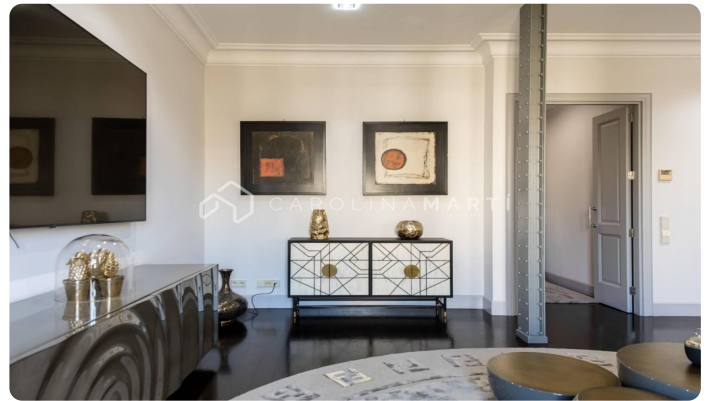
Eixample Dret / Barcelona

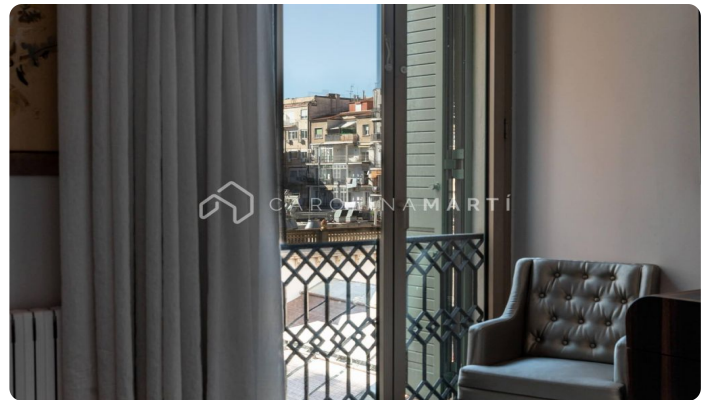
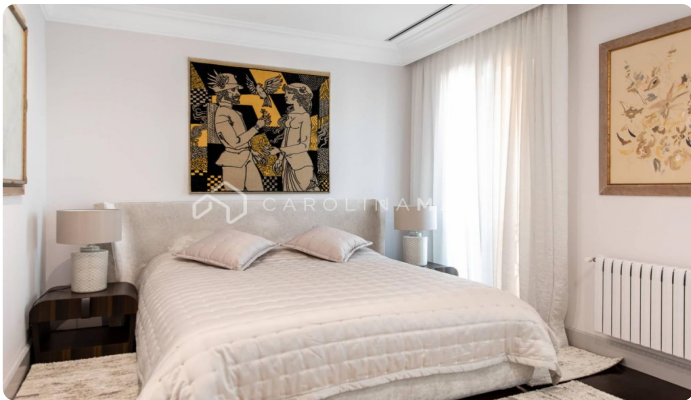
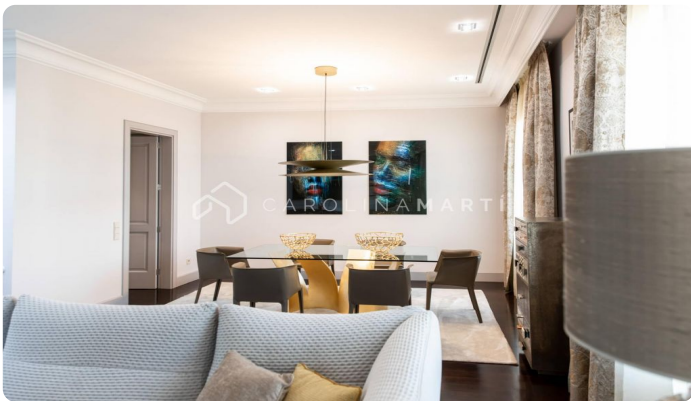
This exclusive 224 m² residence is located in a historic 1885 building, preserving its stately essence and featuring an elevator and architectural elements that add elegance and prestige. This high-end property blends generous spaces, architectural character, and modern comfort. Its 194 m² of usable space are perfectly distributed, offering large rooms and well-defined areas that ensure privacy and functionality. The day area stands out with a spacious living–dining room featuring large windows that flood the space with natural light and offer privileged views of the iconic Casa Milà – La Pedrera, one of Gaudí’s masterpieces. The home includes a separate fully equipped kitchen and a service bedroom with its own bathroom. The night area comprises three bedrooms: a master suite with walk-in closet and full bathroom, and two double bedrooms, each with its own full bathroom. An exceptional home for those seeking space, history and quality in one of Barcelona’s most coveted locations.

€9,800

194 m²
4 Bedrooms
3 Bathrooms
AC
Lift
Furnished
Balcony
Built-in closets







Contact us for more information or to arrange a viewing

Tel: +34 93 241 10 95

info@carolinamarti.com

www.carolinamarti.es