

## Unique on Passeig de Gràcia, modernist estate, next to La Pedrera - Casa Milà

Ref: CM12099



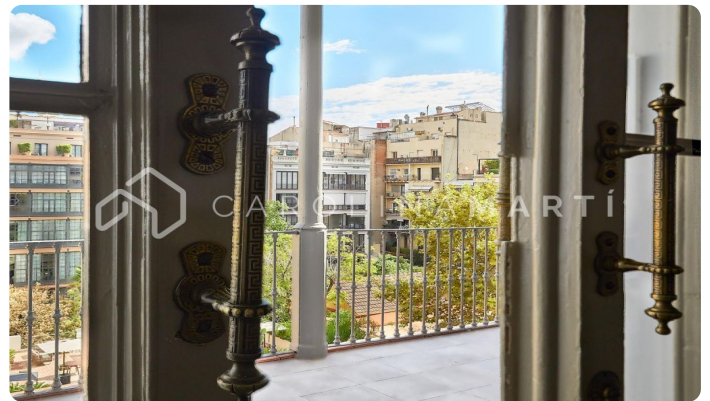
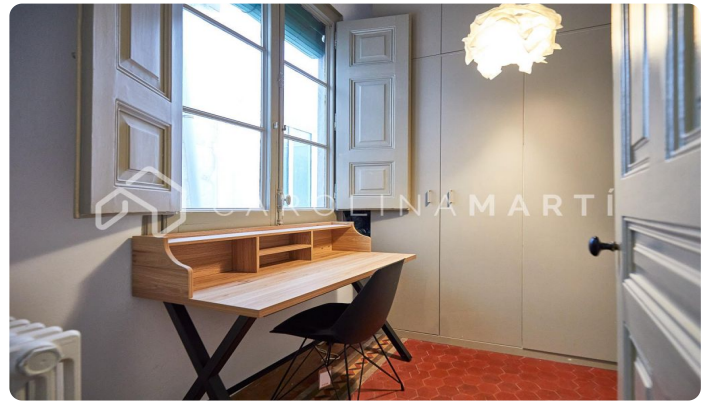
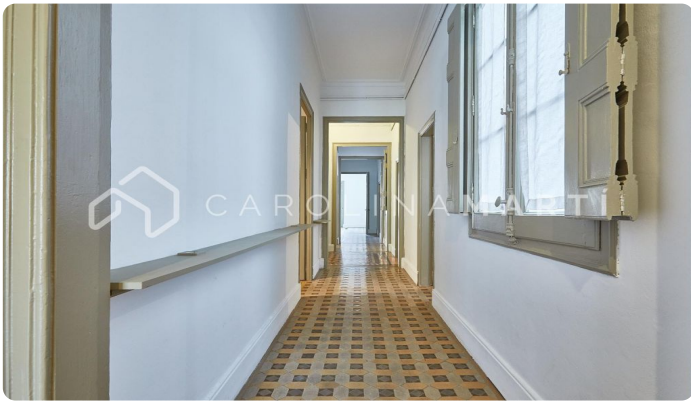
### Eixample Dret / Barcelona

Unique on Passeig de Gràcia! Next to La Pedrera - Casa Milà, we present EXCLUSIVELY this impressive property. It is a modernist building, with a concierge service. Entrance with high ceilings and a marble staircase, recently renovated and refurbished. The property consists of approximately 240 m2, as well as a 25 m2 terrace. It has 4 bedrooms and 4 bathrooms, two living rooms with a fireplace and 2 balconies overlooking Passeig de Gràcia. Lots of sun and natural light in all rooms. High coffered ceilings and hydraulic tile floors, original and in excellent condition. Perfect layout, completely square, with wonderful and privileged views. 2 optional parking spaces in front of the building. Don't miss this opportunity! Get in touch for more information.

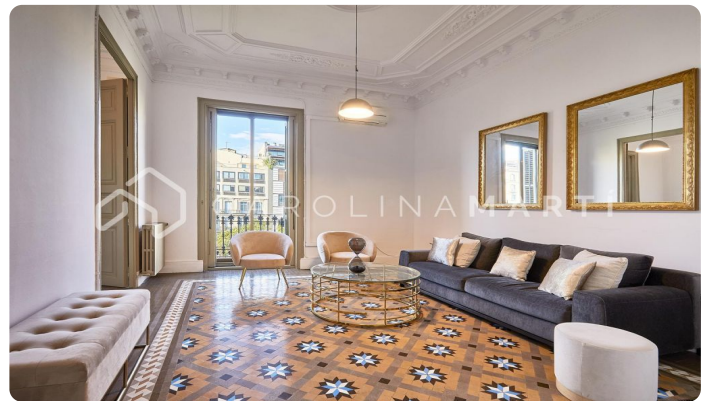
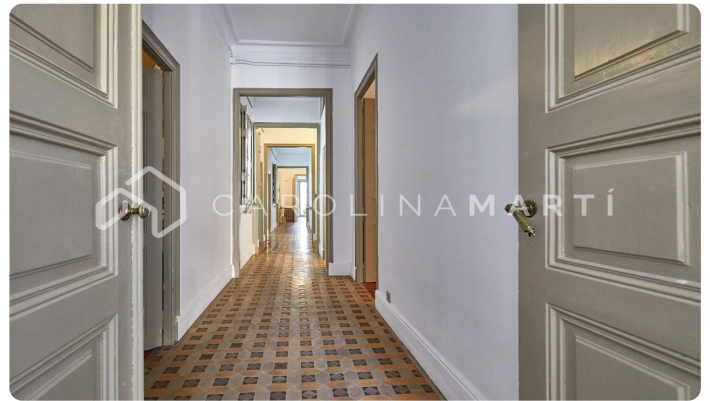
**€2,350,000**

215 m²  
4 Bedrooms  
4 Bathrooms  
A/C  
Heating  
Views  
Mountain views  
Storage  
Lift  
Fireplace  
Security  
Terrace  
Concierge  
Balcony  
Built-in closets  
Outside

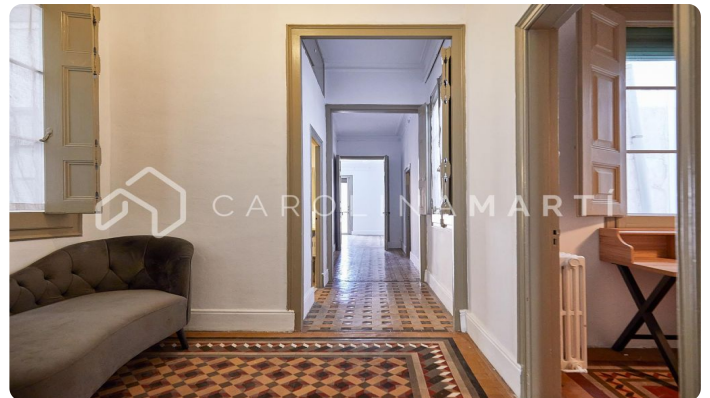












Contact us for more information or to arrange a viewing

Tel: +34 93 241 10 95

[info@carolinamarti.com](mailto:info@carolinamarti.com)

[www.carolinamarti.es](http://www.carolinamarti.es)