

## House with a 1500 m2 plot for sale in Sitges, Barcelona

Ref: CM1173



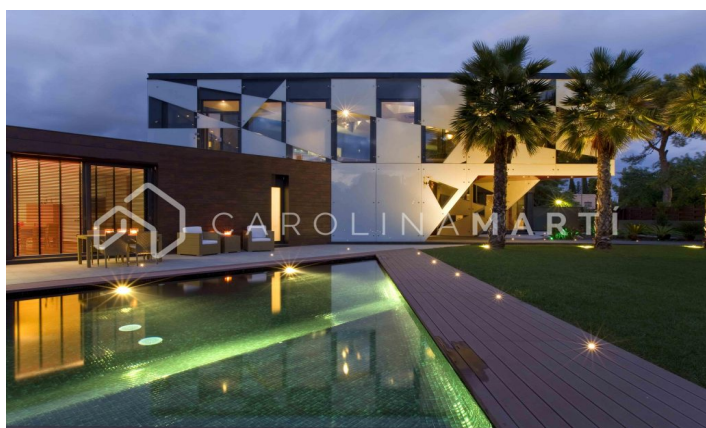
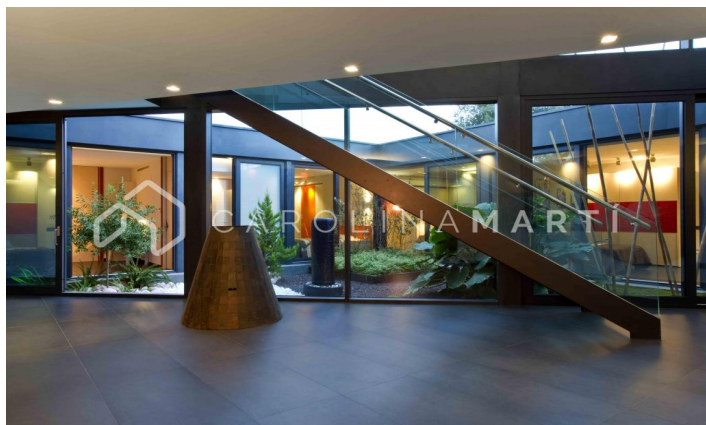
### Sitges

Carolina Martí presents this astonishing designer villa in the luxurious Terramar community in Sitges, one minute away from the beaches. Settled on a grandiose flat corner plot of 1,500 m2, the house has 892 m2 of constructed area distributed over 2 floors and a lower floor. Thus, horizontality and open spaces with lots of light predominate in this luxurious home, which has state of the art finishes: Italian ceramics, triangular pool, porch, double-height ceilings, large windows, entirely precast concrete panels. Designed by a renowned architect, all the bedrooms were conceived outside small garden oases that mimic a total connection to nature. The 350 m2 ground floor has 4 full suites with independent bathrooms, a large kitchen-dining room with quality finishes and Gaggenau appliances and a central island. Spacious living room with access to the garden with triangular swimming pool and hydromassage jacuzzi, with large windows that allow the entrance of plenty of natural light. The upper floor consists of a 70 m2 open-plan multipurpose room completely exterior and glazed with access to another exterior area. In the basement (330 m2) we have a large garage with capacity for 10 cars, storage area, a double service bedroom with own bathroom, laundry room, a pan...

**€5,950,000**

892 m<sup>2</sup>  
 5 Bedrooms  
 6 Bathrooms  
 1,500 m<sup>2</sup> plot  
 Pool  
 A/C  
 Heating  
 Backyard  
 Storage  
 Furnished  
 Parking  
 Terrace





**QUALIFICACIÓ ENERGÈTICA DE L'EDIFICI ACABAT** ETIQUETA

DADES DE L'EDIFICI

Normativa vigent construcció/rehabilitació: CTE 2006

Tipus d'edifici: **Habitatge unifamiliar**

Adreça: **Super**

Referència catastral: **08870**

C.I.F.: **Catalunya**

C. Autònoma:

**ESCALA DE LA QUALIFICACIÓ ENERGÈTICA**

Qualificació	Consum d'energia kWh/m² any	Emissió de CO <sub>2</sub> kg CO <sub>2</sub> /m² any
<b>A</b> més eficient		
<b>B</b>		
<b>C</b>		
<b>D</b>		
<b>E</b>		
<b>F</b>		
<b>G</b> menys eficient		

Consum d'energia: **85** kWh/m² any

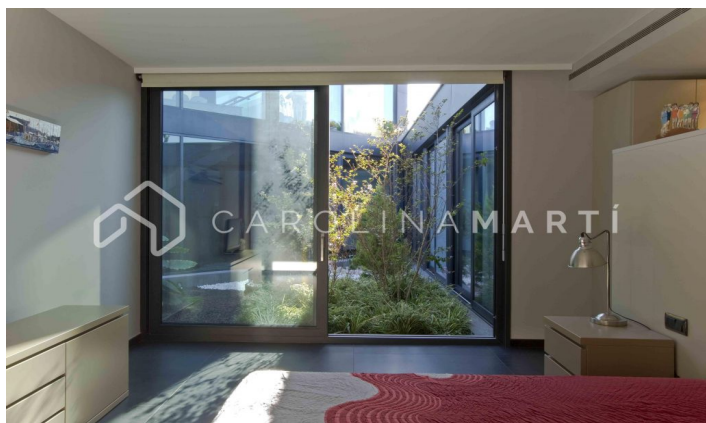
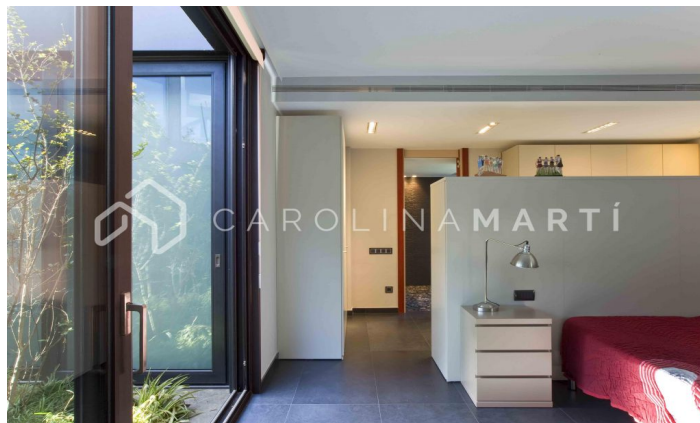
Emissió de CO<sub>2</sub>: **19** kg CO<sub>2</sub>/m² any

REGISTRE: \_\_\_\_\_

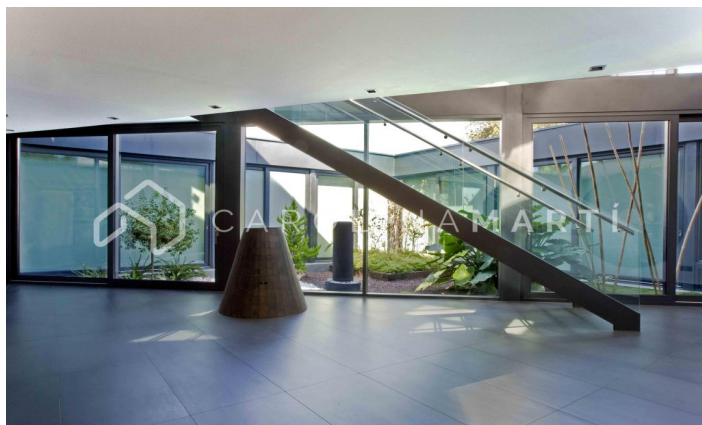
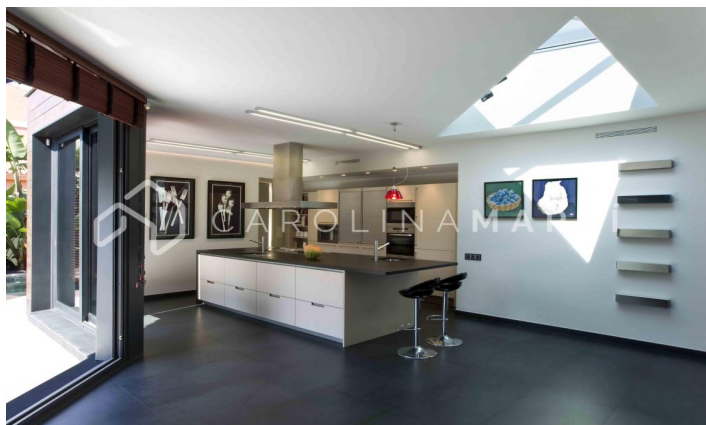
Valid fins: \_\_\_\_\_

Generalitat de Catalunya Institut Català d'Energia

ESPAÑA Directiva 2010 / 31 / UE







Contact us for more information or to arrange a viewing

Tel: +34 93 241 10 95

[info@carolinamarti.com](mailto:info@carolinamarti.com)

[www.carolinamarti.es](http://www.carolinamarti.es)